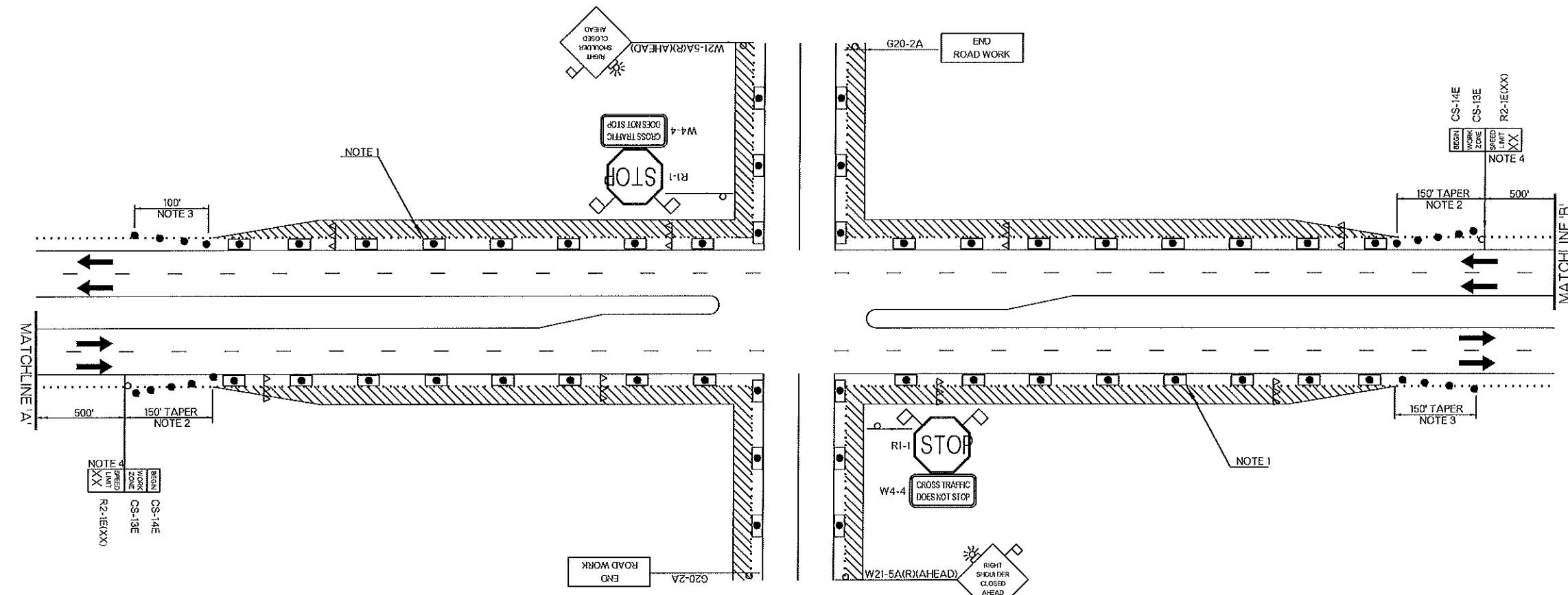
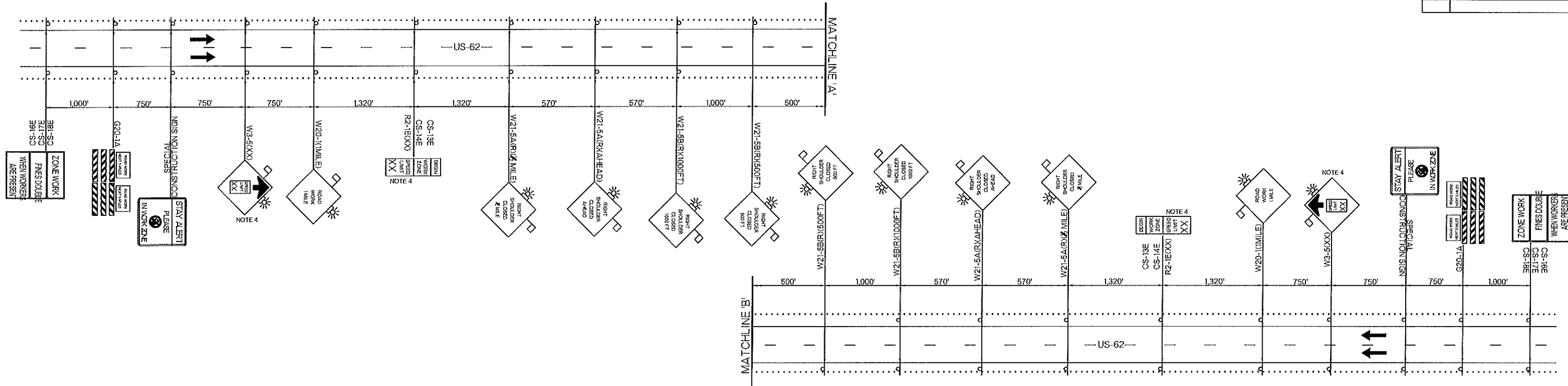


REV. NO.	DESCRIPTION	REVISIONS	DATE



NOTE 1  
MAXIMUM SPACING BETWEEN CHANNELIZING DEVICES (FEET) SHALL BE EQUAL TO TWICE THE POSTED SPEED LIMIT (M.P.H.) WITH THE FOLLOWING EXCEPTIONS. SPACING SHALL NOT EXCEED 50 FEET FOR CONES OR TUBE CHANNELIZERS. SPACING SHALL NOT EXCEED 75 FEET FOR CHANNELIZER CONES. SPACING SHALL NOT EXCEED 100 FEET FOR TYPE II BARRICADES, VERTICAL PANELS OR DRUMS.

NOTE 2  
A MINIMUM OF FIVE (5) CHANNELIZING DEVICES SHALL BE PLACED THROUGH THIS TAPER.

NOTE 3  
DOWNSTREAM TAPERS SHALL CONTAIN A MINIMUM OF FOUR (4) CHANNELIZING DEVICES.

NOTE 4  
CONSTRUCTION SPEED LIMIT TO BE DETERMINED BY THE DIVISION ENGINEER.

FOR ADDITIONAL INFORMATION ABOUT TAPER LENGTHS AND SPACING OF CHANNELIZING DEVICES, SEE STANDARD DRAWING TCS2-1-(LATEST REVISION).

- KEY:
- p- SIGN
  - DRUM
  - ▨ WORK AREA
  - ▲▲▲ TYPE III BARRICADE
  - ◻ CHANNELIZER CONE

**TRAFFIC CONTROL DETAIL  
TRAFFIC SIGNAL INSTALLATION  
& PHASE 4**

Drawn	RGN	2/16
Design	RGN	2/16
Checked	JLS	2/16
TRAFFIC ENGINEERING JAMI SHORT		

STATE OF OKLAHOMA DEPARTMENT OF TRANSPORTATION

DIVISION 1 STATE JOB NO. 27956(04) SHEET NO. 79

DRAWING NOT TO SCALE